

# GRAND DESIGNS

# A U S T R A L I A

**PETER MADDISON**  
ANSWERS YOUR QUESTIONS

**CLEVER KITCHENS & BRILLIANT BATHROOMS**

**COLOUR FORECAST**

# 58

ways to get the 2017 look

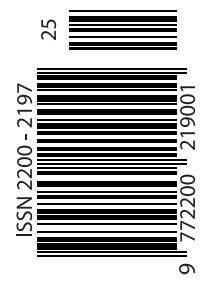
BE INSPIRED BY DANISH HYGGE STYLE



# Smooth Operator

WHY THE ARCHITECTS BEHIND THE TOORAK HOUSE DECIDED TO THINK SMART, NOT BIG

**Issue 6.2**  
AUS \$9.95\*  
(Incl. GST)



**MOODY CUES**  
WINDOWS, DOORS  
& SKYLIGHTS  
LIGHTING & HEATING



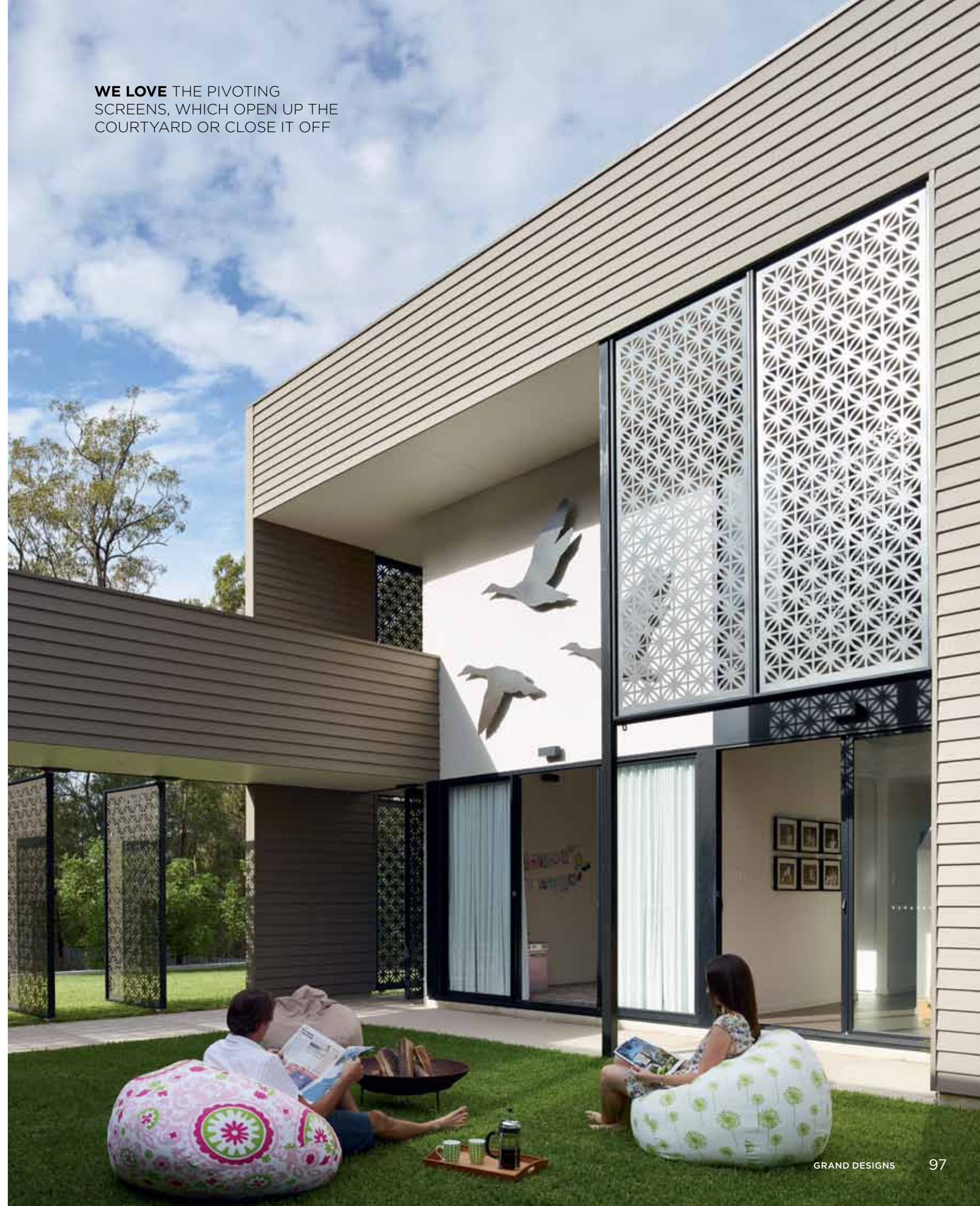
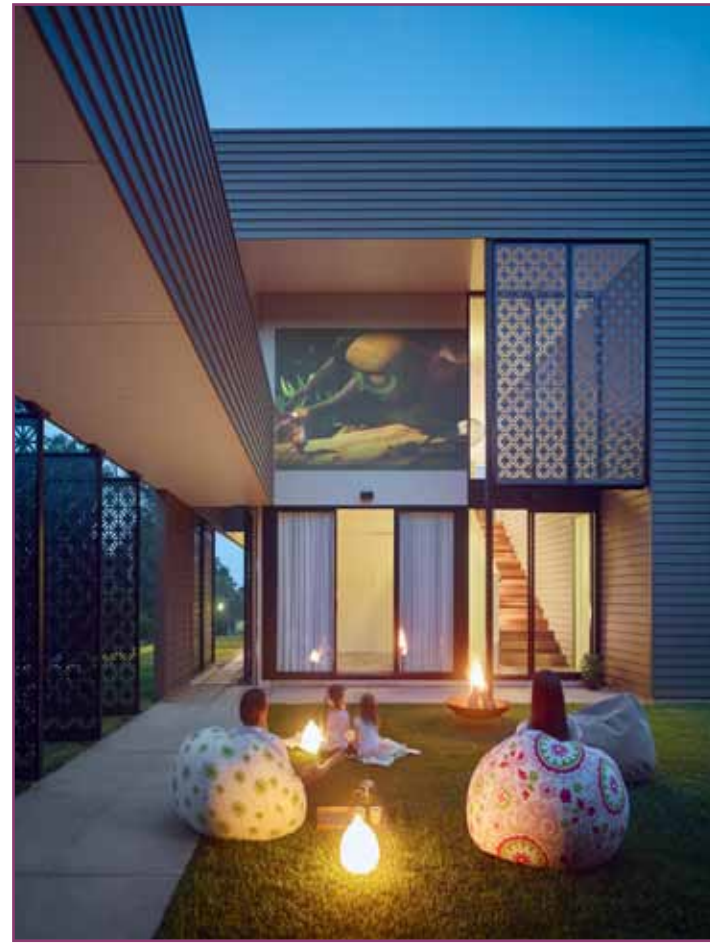
# HIGH FLYER

WHEN TWO ARCHITECTS BUILD THEIR DREAM HOME, YOU KNOW IT'S GOING TO BE GOOD



PROJECT // BIRD HOUSE





**WE LOVE** THE PIVOTING SCREENS, WHICH OPEN UP THE COURTYARD OR CLOSE IT OFF

**WORDS** // ANNABELLE CLOROS **PHOTOGRAPHY** // SCOTT BURROWS

If you have to take your work home, you may as well do it in style. Such was the case for architects Mark and Angela Jamison, who built their dream home and their dream work studio wrapped up in one. The concept of the Bird House revolved around creating a residence that captured the essence of nature on a sloping block of land with views of the Gold Coast skyline.

Mark and Angela designed a home for themselves and their two young daughters that essentially consists of two pavilions connected by a central grassed courtyard — one pod for their home and the other for their workplace, Jamison Architects. “Our brief was to design a unique home for our family and a working studio for our architectural practice,” says Mark. “We wanted to make the most of our site, our climate and our budget to achieve a high level of architecture that was efficient, responsive and connected to the surrounding environment.”

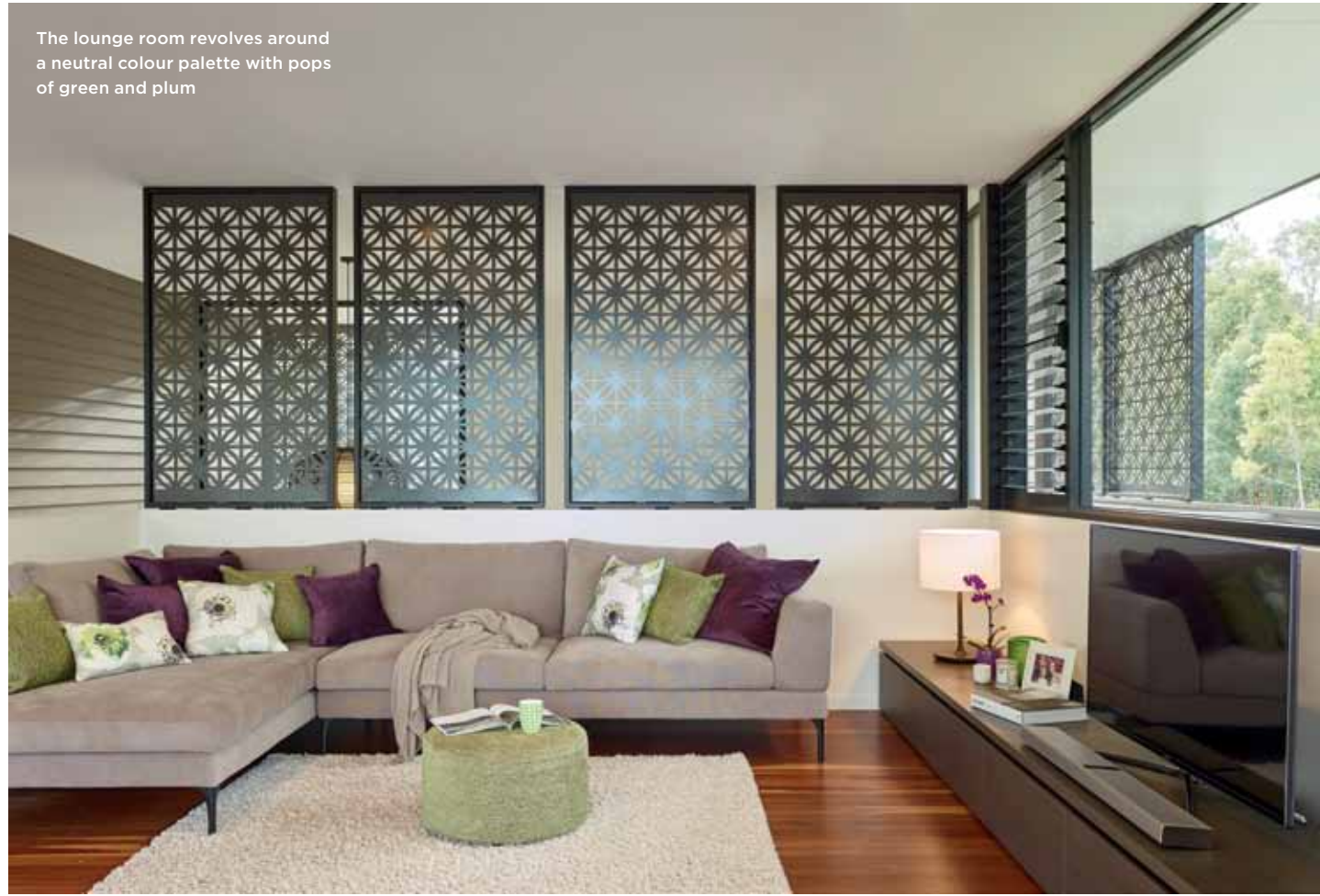
Realising a house that was unique and respectful of the environment was a major consideration for the project, as was leaving a light footprint. The home doesn’t require air conditioning thanks to its clever design, which takes full advantage of natural light and boasts cross-ventilation and thermal mass, a rain water tank, insulation and an electric heat pump. Passive solar design principles, cost-effective materials and construction methods were also utilised throughout the build. “We designed the house so we could fully appreciate the beauty of our climate, our site and the wildlife and birdlife around us,” says Angela. “We feel like we are living in the tree canopy — we can hear the birds, the leaves rustling in the wind and we feel the cool breeze flow through the house.”

**DETAILS**  
**HOUSE** BIRD HOUSE  
**LOCATION** GOLD COAST, QUEENSLAND  
**DATE COMMENCED** JUNE 2012  
**DATE COMPLETED** NOVEMBER 2012

**TOP LEFT** Moveable screens create intriguing shadows in the garden  
**TOP RIGHT & OPPOSITE** The family enjoy the fruits of their labour



The lounge room revolves around a neutral colour palette with pops of green and plum



“WE WANTED TO MAKE THE MOST OF OUR SITE, OUR CLIMATE AND OUR BUDGET TO ACHIEVE A HIGH LEVEL OF ARCHITECTURE THAT WAS EFFICIENT, RESPONSIVE AND CONNECTED TO THE SURROUNDING ENVIRONMENT” - MARK JAMISON

The architects decided to split the house in two to capitalise on city views as well as separate communal and private spaces. “On the ground level we have the entrance, a multi-purpose space, two children’s bedrooms, a children’s bathroom, master bedroom with ensuite, laundry and a powder room,” says Mark. “Upstairs, we have the living, kitchen and dining spaces, a study nook, powder room and outdoor deck.” Angela and Mark decided to use a double-storey void over the entrance, staircase and multipurpose room to connect the two levels visually, which generates a greater feeling of space and links the two areas.

To ensure the house melted into the landscape, Angela and Mark utilised a neutral palette chock-full of earthy tones and natural materials. “In terms of atmosphere, we wanted a light, airy, open home that would enable us to connect with and appreciate the landscape and climate we live in,” continues Mark. To connect both indoors and outdoors, laser-cut screens feature inside and out and were inspired by Angela’s time in Asia with architect Kerry



Timber flooring creates instant warmth throughout the interior





Hill. "We used Laminex Licorice Linea for the joinery throughout and the flooring upstairs is ironbark," says Angela. "Window and sliding door frames are powder-coated aluminium black and also complement the dark ironbark trees around us."

Mark says the courtyard is his favourite part of the project and can be closed off or opened up thanks to pivoting screens. "The courtyard is the green heart of the home and a functional, multipurpose space which provides a unique

point of entry, an arrival experience and a separation between the private realm of the home and the architectural studio," says Mark.

Proving the power of simplicity and going back to basics, the Bird House is a remarkable structure that calls on the beauty of nature. "Architecture is not just about physically creating a built form to admire," says Angela. "It is about creating spaces that have a sense of place and wellbeing." 🌿

**ABOVE** The Ironbark trees seen through the window are reflected in the colour of the joinery  
**OPPOSITE** The family living room is put to good use



TO ENSURE THE HOUSE MELTED INTO THE LANDSCAPE, ANGELA AND MARK UTILISED A NEUTRAL PALETTE CHOCK-FULL OF EARTHY TONES AND NATURAL MATERIALS

**ED'S FAVE** THE VIEWS OF THE TREETOPS FROM THE TOP STOREY



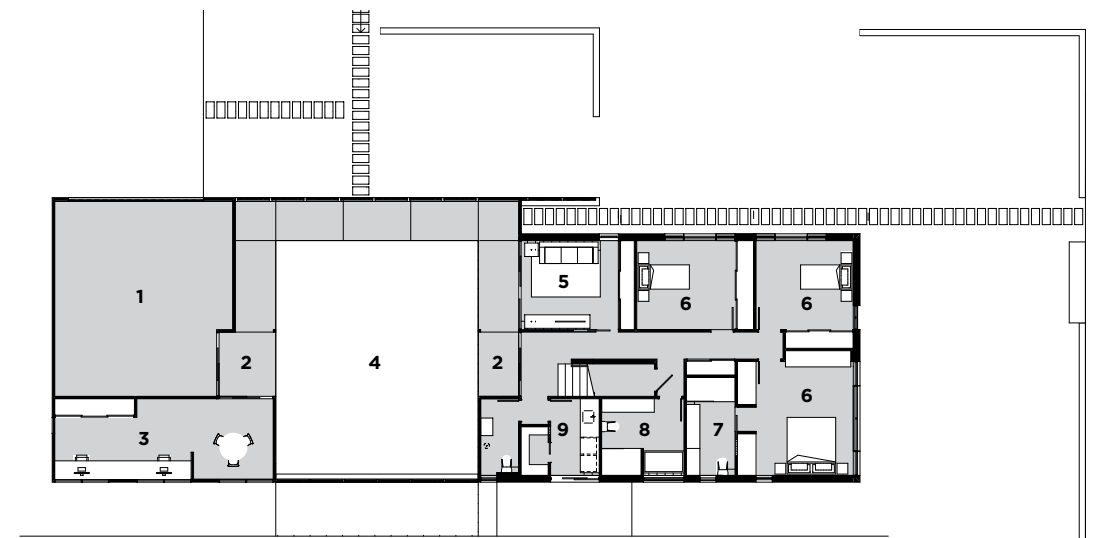


**PROJECT TEAM**  
**Architects and interior design**  
 Mark and Angela Jamison,  
 Jamison Architects  
 (jamisonarchitects.com.au)  
**Builder** H2 Constructions  
 (h2homes.com.au)

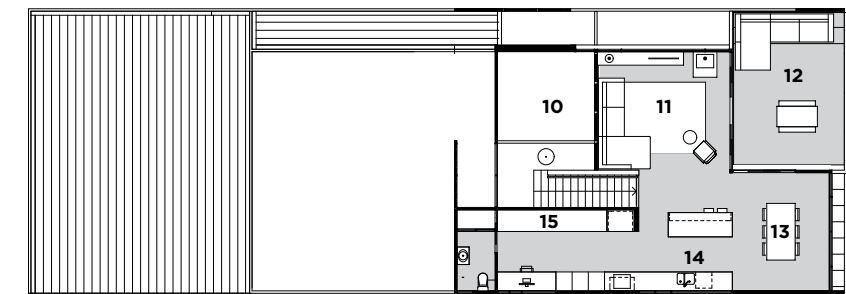
“WE FEEL LIKE WE ARE LIVING IN THE TREE CANOPY – WE CAN HEAR THE BIRDS, THE LEAVES RUSTLING IN THE WIND AND WE FEEL THE COOL BREEZE FLOW THROUGH THE HOUSE” - ANGELA JAMISON

**LEGEND**

- 1 GARAGE
- 2 ENTRY
- 3 STUDIO
- 4 COURTYARD
- 5 FAMILY ROOM
- 6 BEDROOM
- 7 ENSUITE
- 8 BATHROOM
- 9 LAUNDRY
- 10 VOID
- 11 LOUNGE ROOM
- 12 DECK
- 13 DINING ROOM
- 14 KITCHEN
- 15 STORAGE



**GROUND FLOOR PLAN**



**FIRST FLOOR PLAN**



*Colour Palette*

Colour choice adds to the tranquillity of this design. Green appears in the furnishings and the off-white chosen for the walls. Timber adds to the natural feel, and taupe and black help anchor the palette. Shots of purple are a nod to the sky at sunset

