

noone

DESIGN

FOR THE WAY YOU LIVE

ANNUAL COLLECTOR'S EDITION

CELEBRATING 20 YEARS OF
AUSTRALIAN & INTERNATIONAL DESIGN

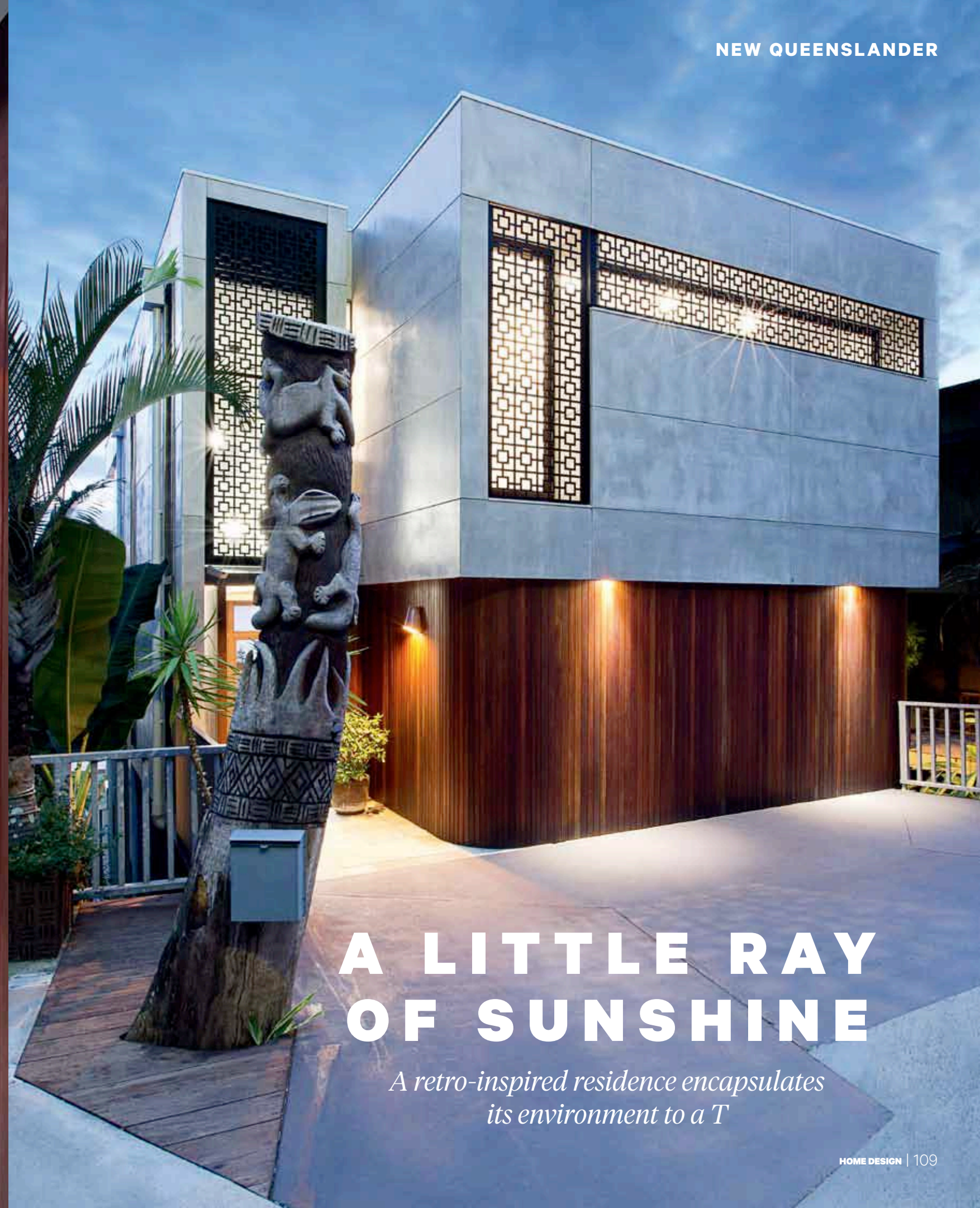
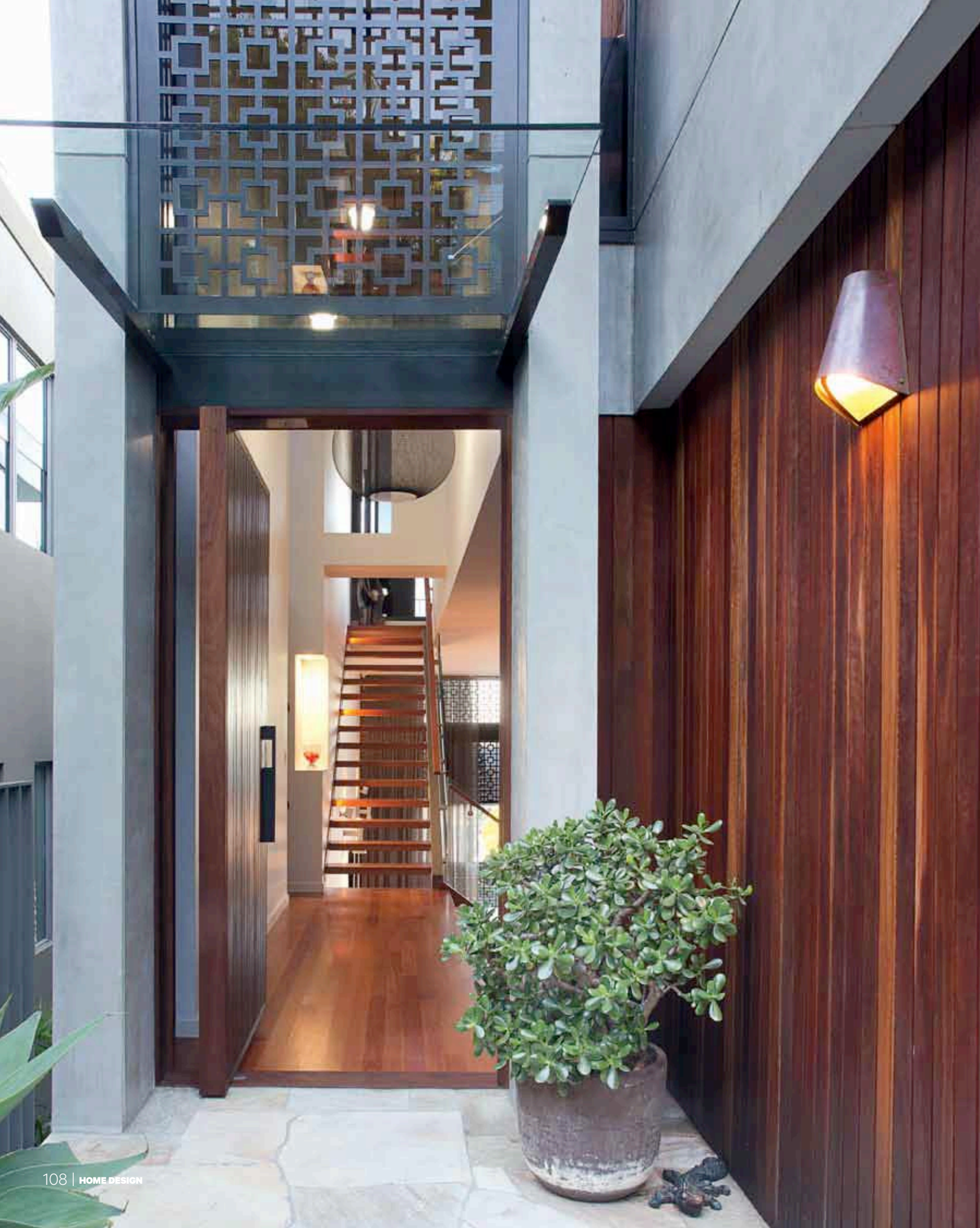
Universal Magazines Vol. 19 No. 1 AUS \$14.95*
NZ \$14.50 (Both incl. GST)

ISSN 1327 - 3930



76

9 771327 393007



A LITTLE RAY OF SUNSHINE

A retro-inspired residence encapsulates its environment to a T

Words Annabelle Cloros

Photography Remco Photography

Architecture in the Sunshine State has come a long way — forget Asian-inspired interiors and cardboard cut-out designs. New Queenslanders are modern and sophisticated, drawing on sleek lines and the pristine environment to create a distinct style that's unmistakably theirs. Jamison Architects was called upon to revamp a duplex from the '80s that was practically pinned to the side of a hill, transforming the dated property into one that commands street presence.

Structurally, the home needed a rethink, considering an open carport was used as the entry to the property. Among other speedbumps, the residence failed to take advantage of the water views, which is a big no-no when such scenery is on offer. So what's the solution? "The brief was to open up the existing living spaces to the incredible views that had been restricted by the raked ceiling and add a new upper level," says architect Mark Jamison. With the new level set to include a master suite, lounge and covered deck area, the renovation also incorporated the creation of a new entrance with enclosed



The PH 5 pendant is a classic that never dates

“You feel like you are in the penthouse of a luxury, high-rise apartment”
– Mark Jamison





ed's fave

THE MASTER SUITE WITH THE RAISED LEVEL IS A GENIUS TRICK TO ENSURE VIEWS CAN BE ENJOYED FROM THE COMFORT OF YOUR BED

Inspired by '60s style, décor and art, the clients had a keen interest in the design of the home, in turn inspiring Mark to create a space that ticked all the boxes

garage as well as plans to revamp the existing two bedrooms, bathroom and laundry on the lower floor to suit the new-look aesthetic.

Once the garage was built, vertical, spotted gum timber cladding was wrapped around the walls, concealing the doors and helping the structure melt into the landscape. A new powder room was installed on the entry level along with a staircase to access the newly created upper level. On the living level, the ceiling height was raised half a storey, enabling natural light to flood the space.

Inspired by '60s style, décor and art, the clients had a keen interest in the design of the home, in turn inspiring

Mark to create a space that ticked all the boxes. "The client was very involved in the project's design, especially in the selection of materials, fittings, furniture and furnishings," he says. The timber present on the exterior of the home is continued inside, and is a marking feature of the property.

With timber and glass staircases connecting all the levels together, the interior of the home is sublime. Slightly raised from the lounge space, the master suite on the newly constructed upper level features a connected outdoor area that shows off the water views and has the ability to be completely open or closed off thanks to a flexible sliding door system. There's ample storage space in this generous

ABOVE A generous lounge area is a luxe addition to the bedroom

OPPOSITE BELOW The outdoors can be enjoyed with ease from the master bedroom suite





room, with floor-to-ceiling timber wardrobes that double as a design feature. A moody ensuite explores a palette of charcoal grey, with a stone feature wall adding cream into the mix. “You feel like you are in the penthouse of a luxury, high-rise apartment,” says Mark. The living area downstairs has hugely benefited from a raised ceiling height, giving the room a grand personality. A modular Chesterfield white sofa and a shaggy rug offer

a hint of retro chic that’s modernised by the Scandinavian-style dining area positioned to enjoy the area’s views.

Not without its challenges, the transformation of this home is simply incredible. Now a functional and welcoming space, the environment is fully embraced and greatly contributes to the wanderlust-like atmosphere the project evokes. **HD** jamisonarchitects.com.au

ABOVE A statement splashback introduces earthy tones

in short

- ✦ The home was initially the upper duplex of an '80s building
- ✦ A new garage and upper floor was created to distinguish the different levels within the home
- ✦ The client was influenced by design from the '60s ✦ Spotted gum panelling was used on the exterior which influences the interior's design scheme